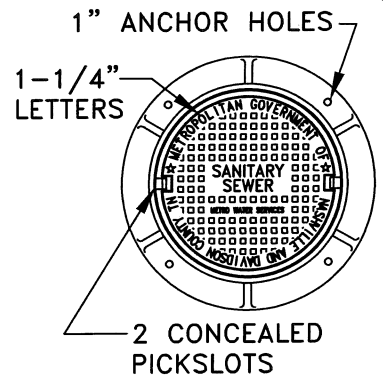


**END VIEW**

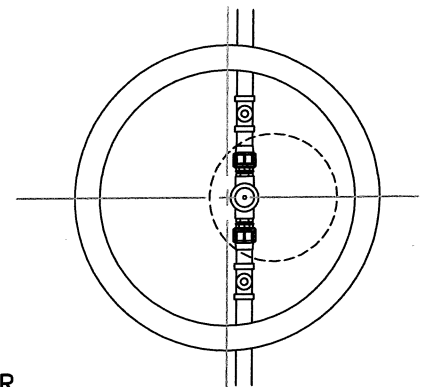
- (A) ASPHALT BINDER AND SURFACE OVERLAY AS REQUIRED BY METRO OR TDOT
- (B) FLOWABLE FILL AS REQUIRED BY METRO OR TDOT
- (C) CRUSHED STONE ENVELOPE AS PER SPECIFICATIONS

SEWER FORCE MAIN TO BE P.V.C. SDR-21 SIZED AS SPECIFIED ON PLANS.

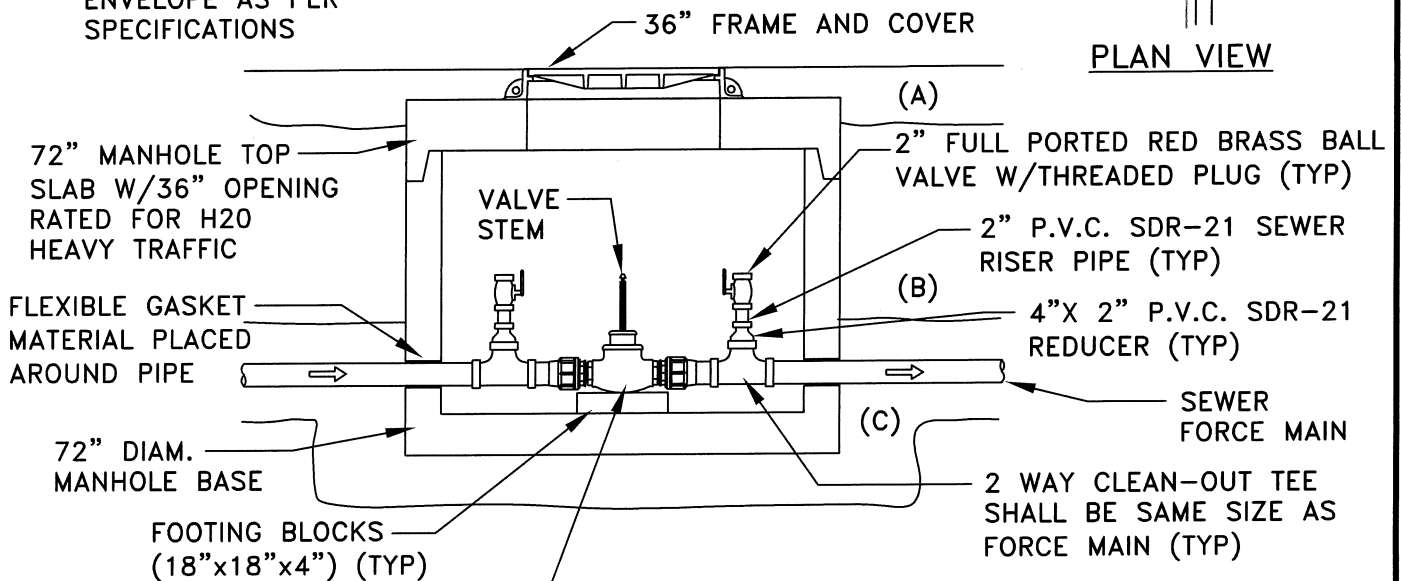
MANHOLE FRAME AND COVER- JOHN BOUCHARD & SONS CO., TO BE HEAVY DUTY, H2O LOAD RATED. (OR APPROVED EQUAL)



**FRAME AND COVER LAYOUT**  
SEE DETAIL SDET001



**PLAN VIEW**



**SIDE VIEW**

VALVE TO BE TRUE UNION THREADED DISCONNECT AND SIZED SAME AS FORCE MAIN. VALVE TO BE INSTALLED AS PER MWS LATEST SPECIFICATIONS.

NOTE: PROPOSED CLEAN-OUT ASSEMBLIES SHALL HAVE 2\" Riser pipe when force main is 2\" or larger. For force mains less than 2\" riser pipe shall match proposed force main size.

MATERIALS MAY VARY AS APPROVED BY METRO WATER SERVICE ENGINEER

## METRO WATER SERVICES

### SEWER FORCE MAIN VALVE AND CLEAN-OUT ASSEMBLY

NOT TO SCALE | DATE: 02/08/19

DWG. NO. GP-5



*Gene B. Scott*  
LICENSED COLLECTION OPERATOR  
*St*

DIRECTOR OF WATER AND SEWERAGE SERVICES